

ADDRESS :
 4 BEATRICE TINSLEY CRESCENT, ROSEDALE AUCKLAND NZ
 PHONE : +64 92188690
 EMAIL : sales@aurae.co.nz
 WEBSITE : www.aurae.co.nz

PROJECT TITLE :
 DATE :
 SCALE :
 LOCATION:
 JOB NUMBER:

18/02/21

OWNER :
 CONFORME :
 DESIGN MANAGER

WINDOW HOOD STANDARD DETAIL

SHEET CONTENTS :
 SECTION
 NOTES : "OTHER SIZES AVAILABLE ON REQUEST"
 DRAWN BY : jabbar@aurae.co.nz

SHEET NO:
 1
 11 11

Drawings and specifications duly signed, stamped or sealed, as instruments of service, are the intellectual properties and documents of the designer /architect, whether the subject for which they are made is executed or not. It shall be unlawful for any person, without the consent of the architect or author of said documents to duplicate or to make copies of said documents for use in the repetition of and for other projects or buildings, whether executed partly or in whole.



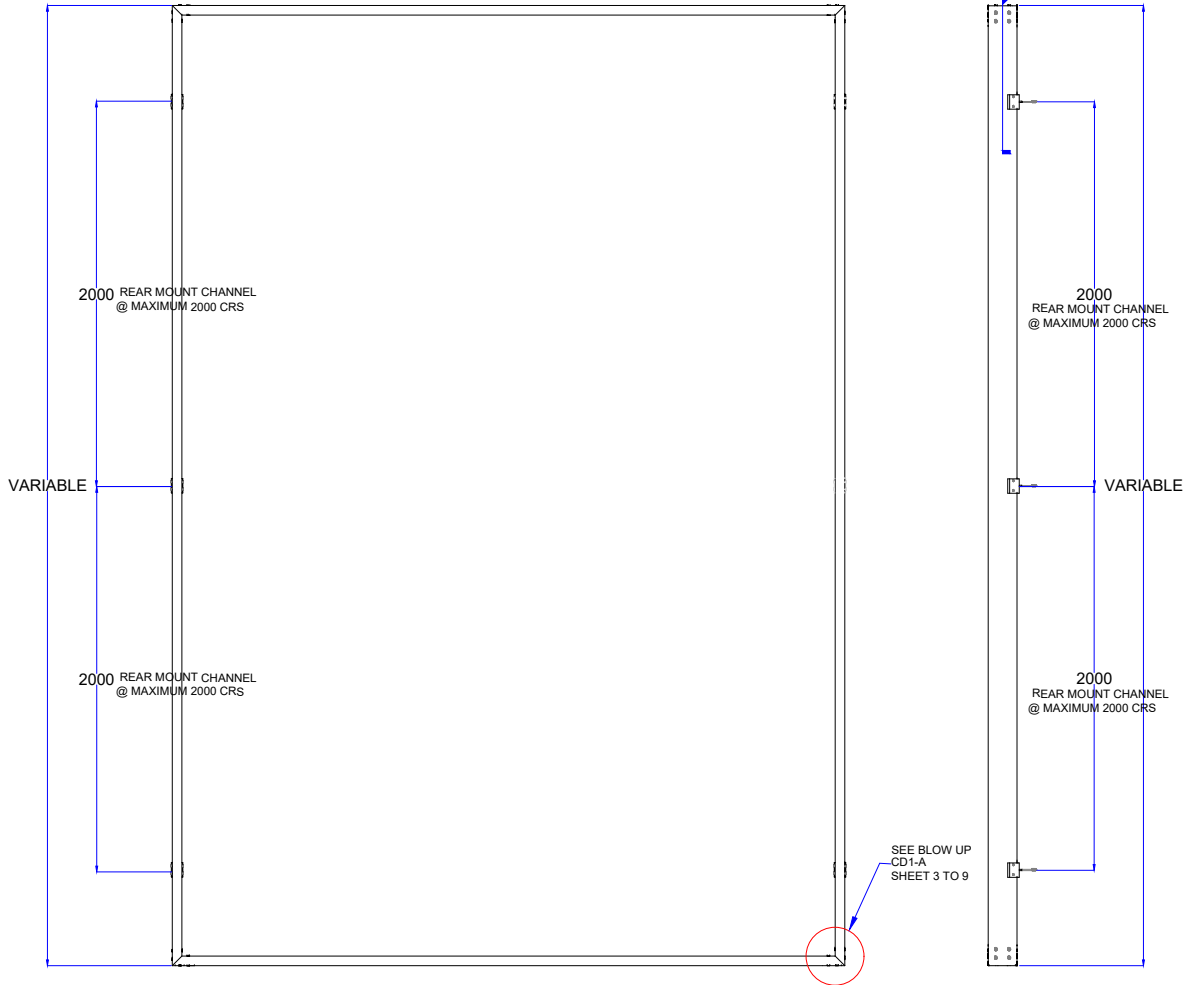
PLAN VIEW

SEE BLOW UP
CD1-B
SHEET 3 TO 9

VARIABLE



SEE BLOW UP
CD1-A
SHEET 3 TO 9



TYP. FRONT ELEVATION

SHOWING 150mm x50mm x3mm RHS

TYP. SIDE ELEVATION

SHOWING 150mm x50mm x3mm RHS

PERSPECTIVE VIEW



ADDRESS :
4 BEATRICE TINSLEY CRESCENT, ROSEDALE AUCKLAND NZ
PHONE : +64 92188690
EMAIL : sales@aurae.co.nz
WEBSITE : www.aurae.co.nz

PROJECT TITLE :
DATE : 18/02/21
SCALE :
LOCATION:
JOB NUMBER:

WINDOW HOOD STANDARD DETAIL

OWNER :
CONFORME :
DESIGN MANAGER

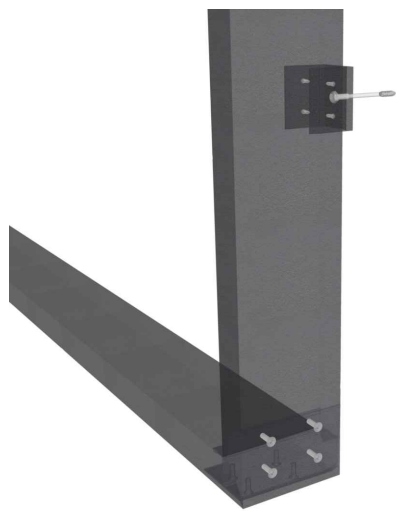
Drawings and specifications duly signed, stamped or sealed, as instruments of service, are the intellectual properties and documents of the designer /architect, whether the subject for which they are made is executed or not. It shall be unlawful for any person, without the consent of the architect or author of said documents to duplicate or to make copies of said documents for use in the repetition of and for other projects or buildings, whether executed partly or in whole.

SHEET CONTENTS :
PLAN VIEW
PERSPECTIVE

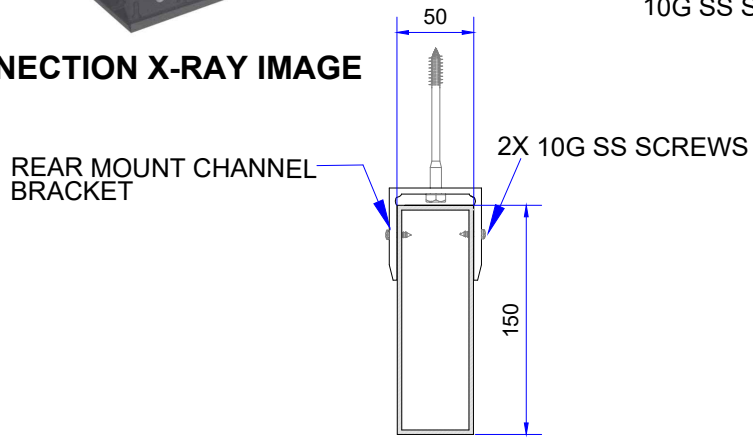
NOTES :
DRAWN BY : jabbar@aurae.co.nz

SHEET NO:
2

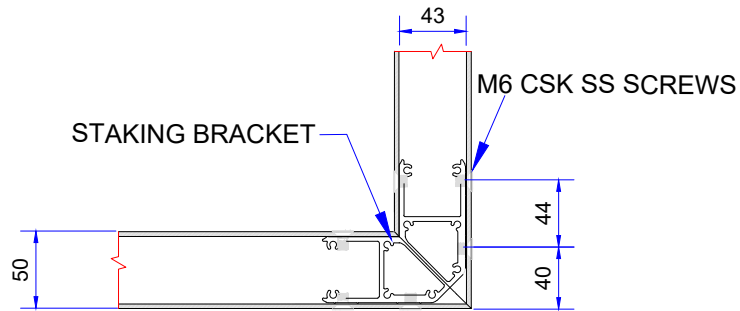
3 **11**



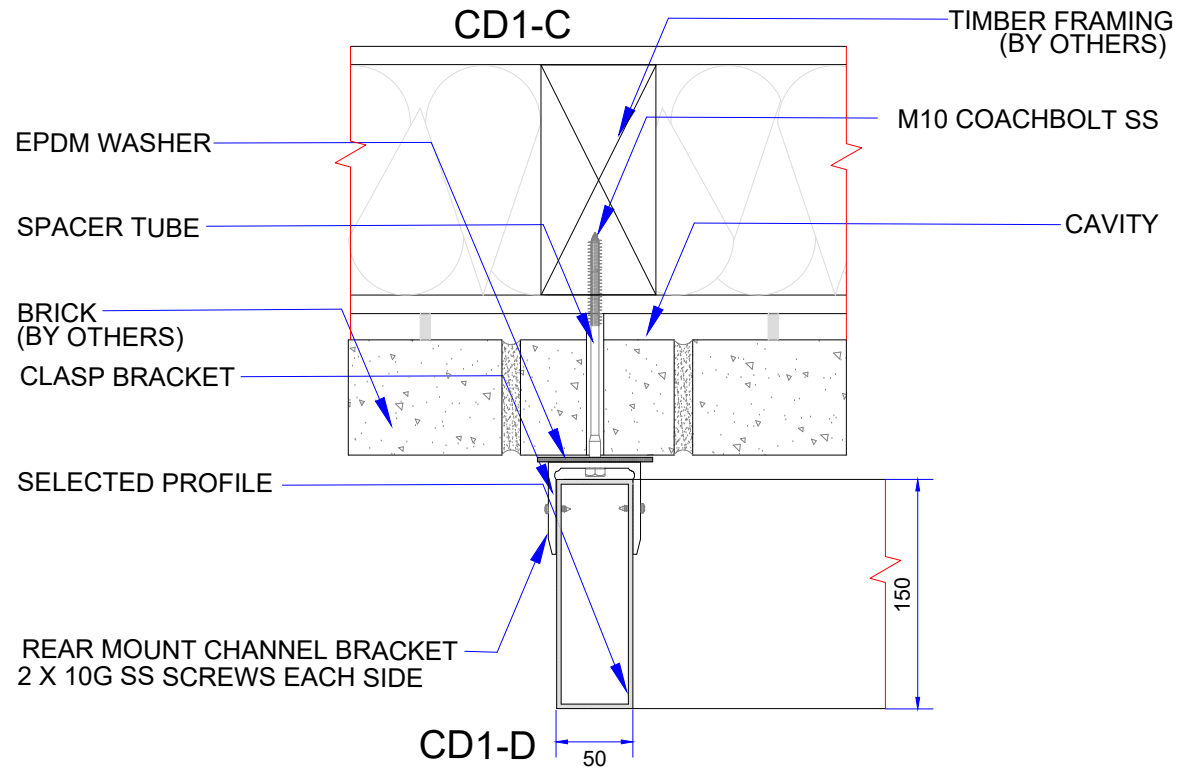
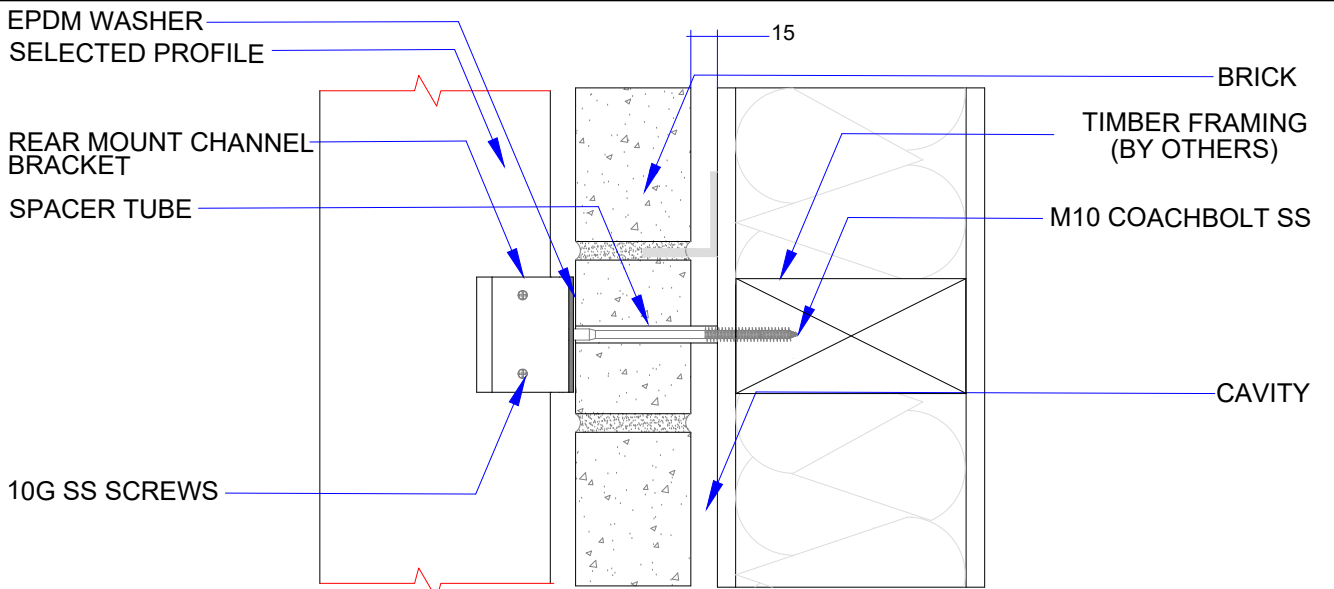
CONNECTION X-RAY IMAGE



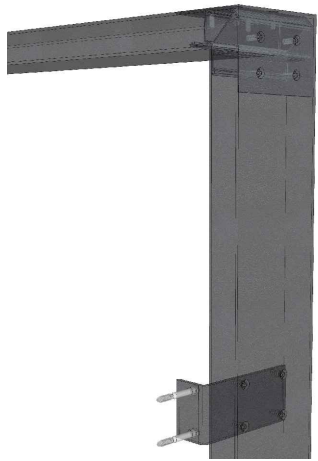
CD1-B



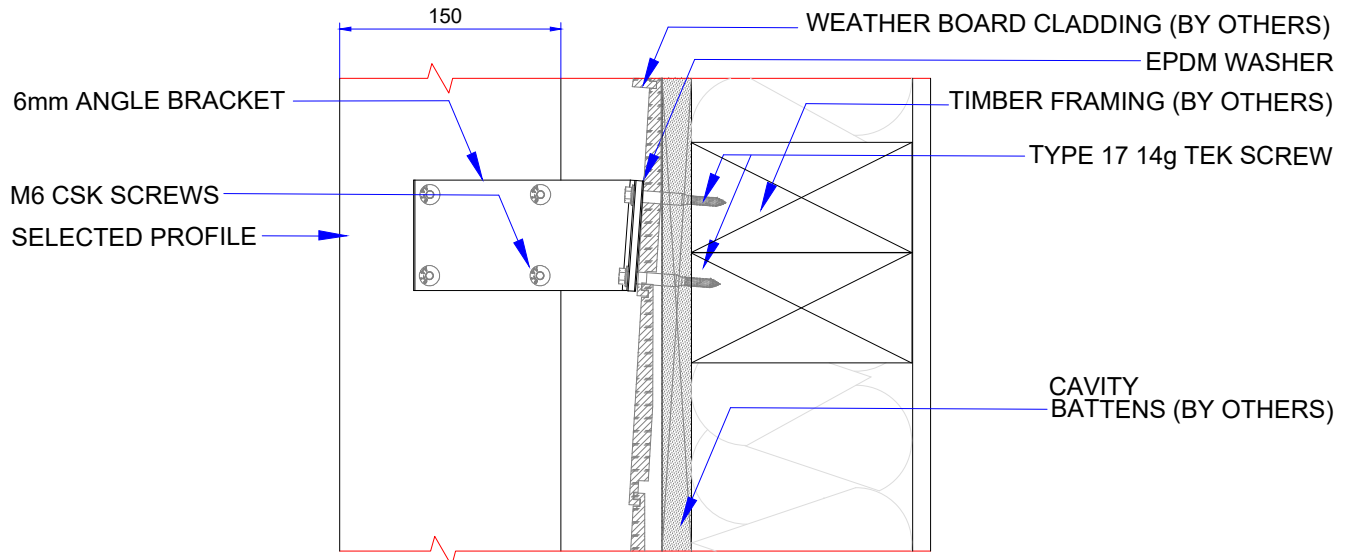
CD1-A



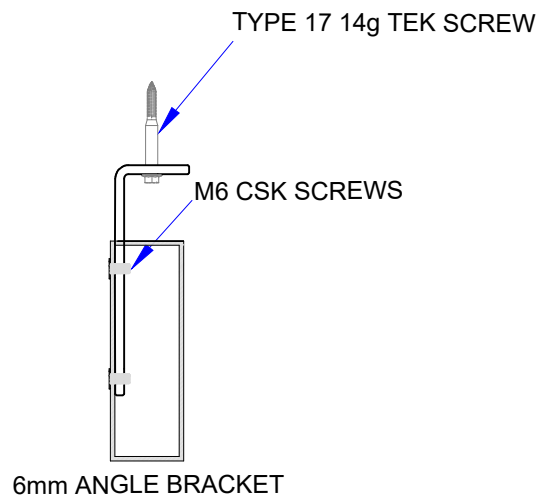
CD1-D



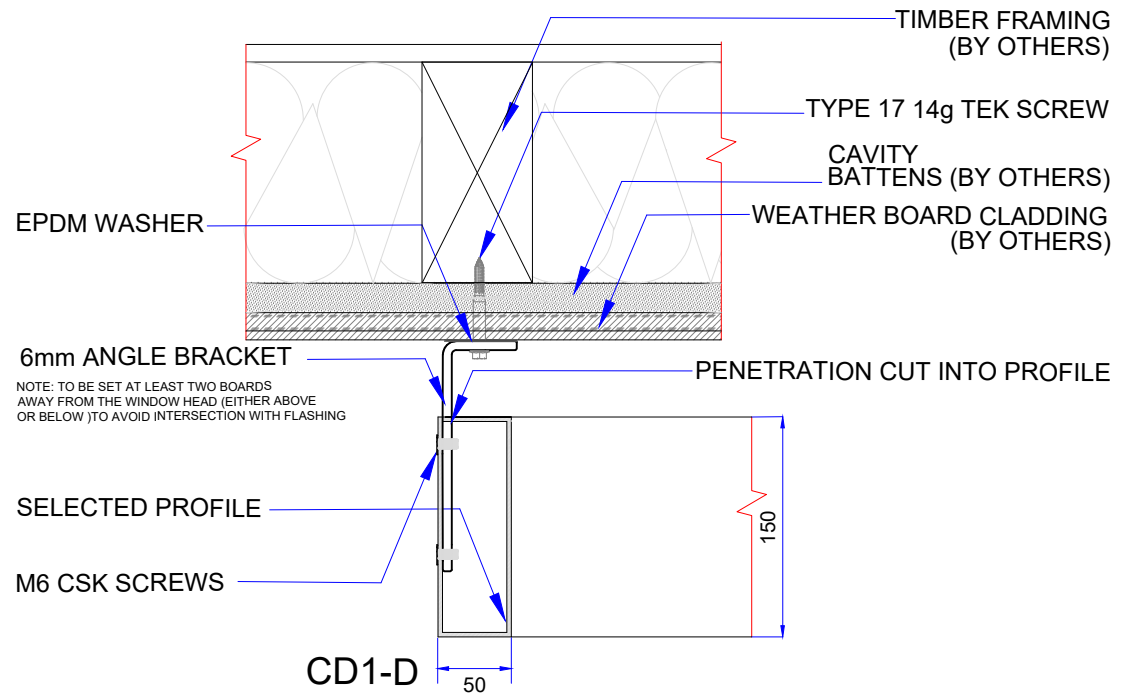
CONNECTION X-RAY IMAGE



CD1-C

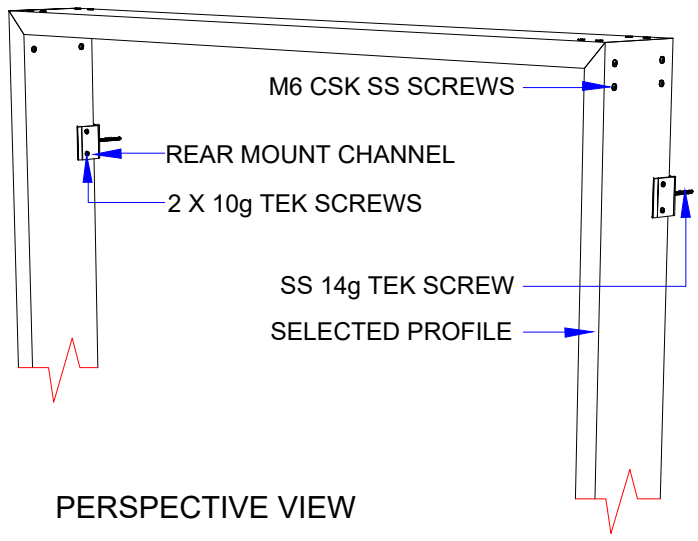


CD1-B

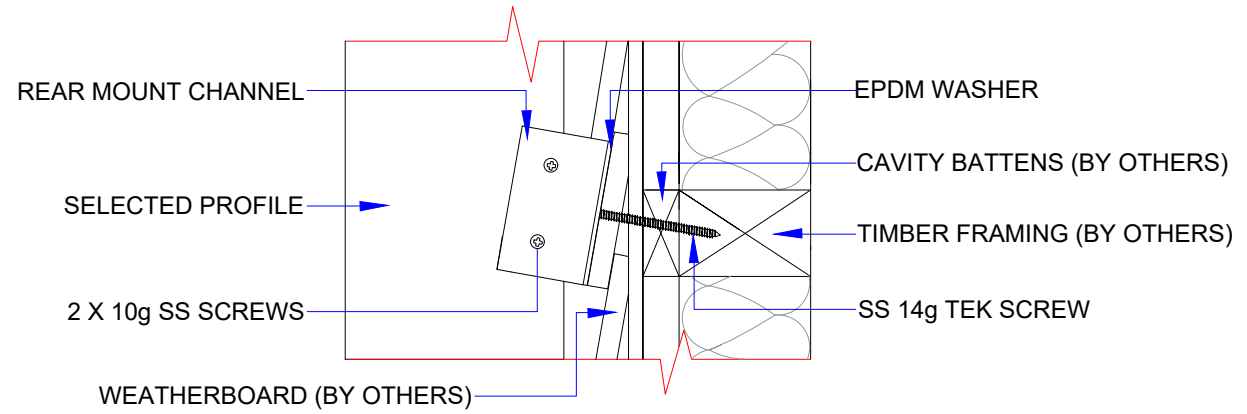


CD1-D

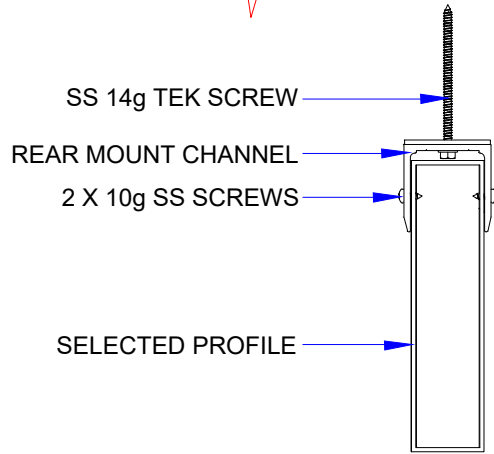
NOTE: TO BE SET AT LEAST TWO BOARDS AWAY FROM THE WINDOW HEAD (EITHER ABOVE OR BELOW) TO AVOID INTERSECTION WITH FLASHING



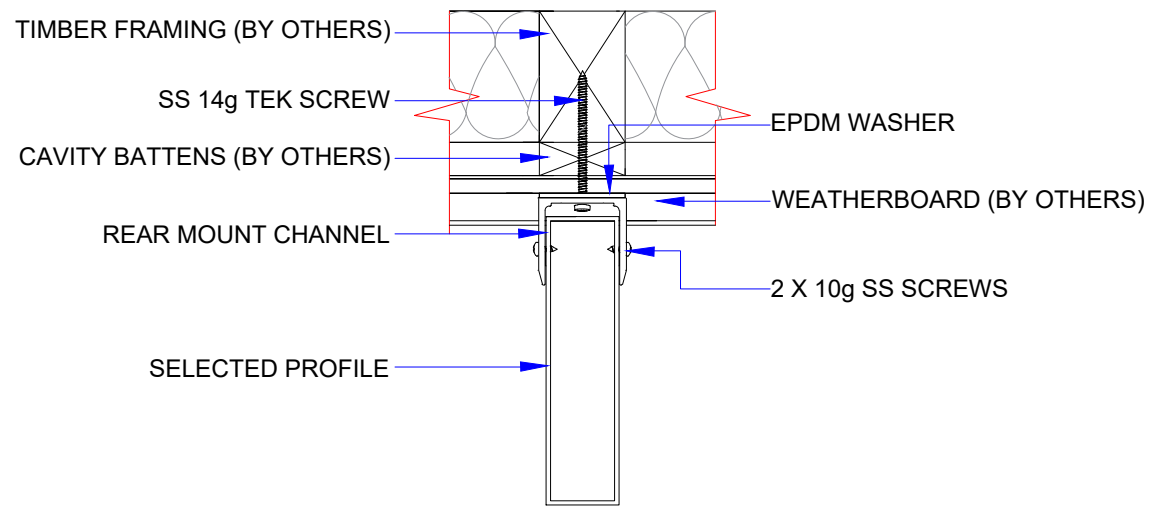
PERSPECTIVE VIEW



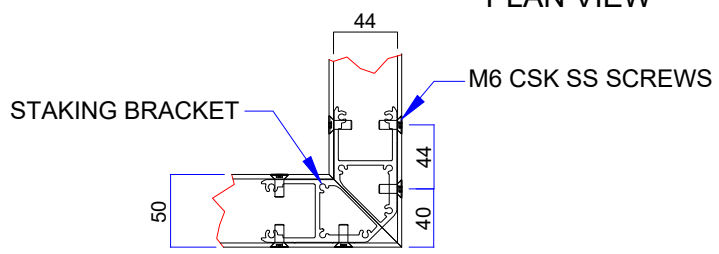
VERTICAL FIXING DETAILS



PLAN VIEW



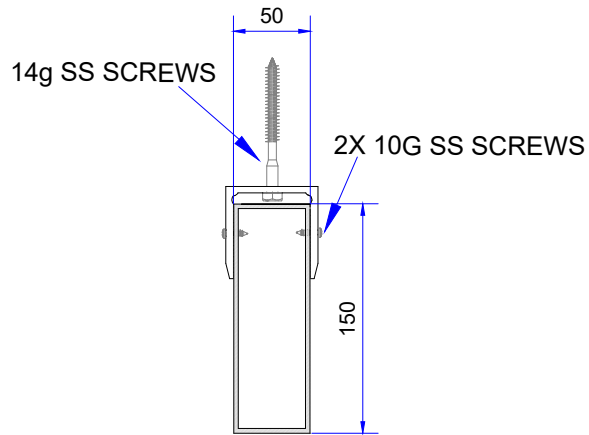
HORIZONTAL FIXING DETAILS



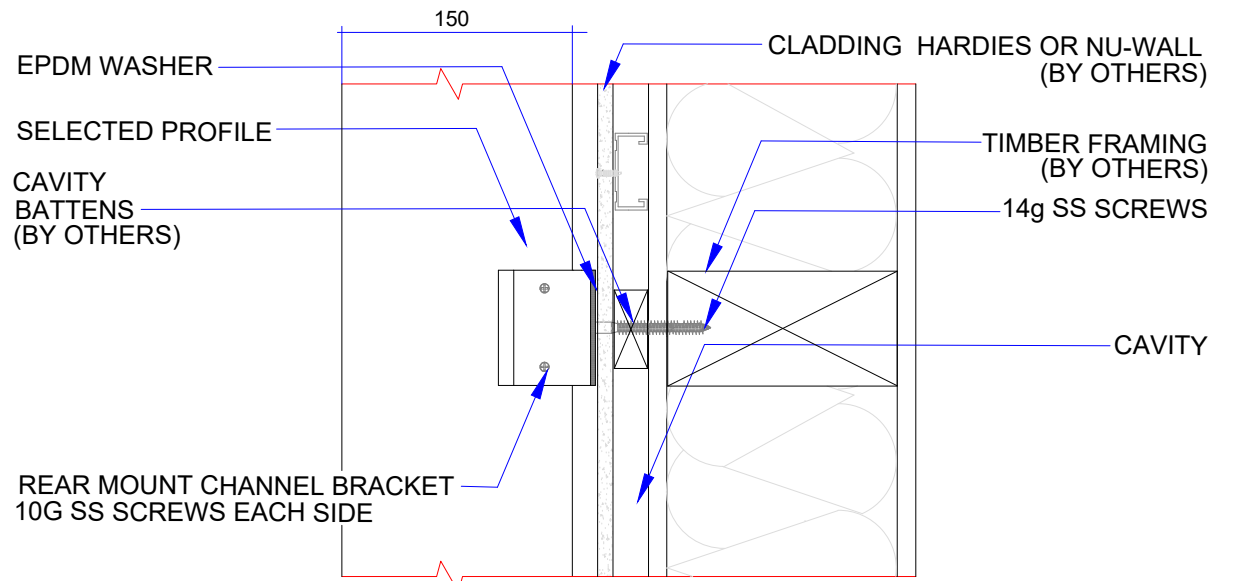
FRAME CORNER STAKING DETAILS



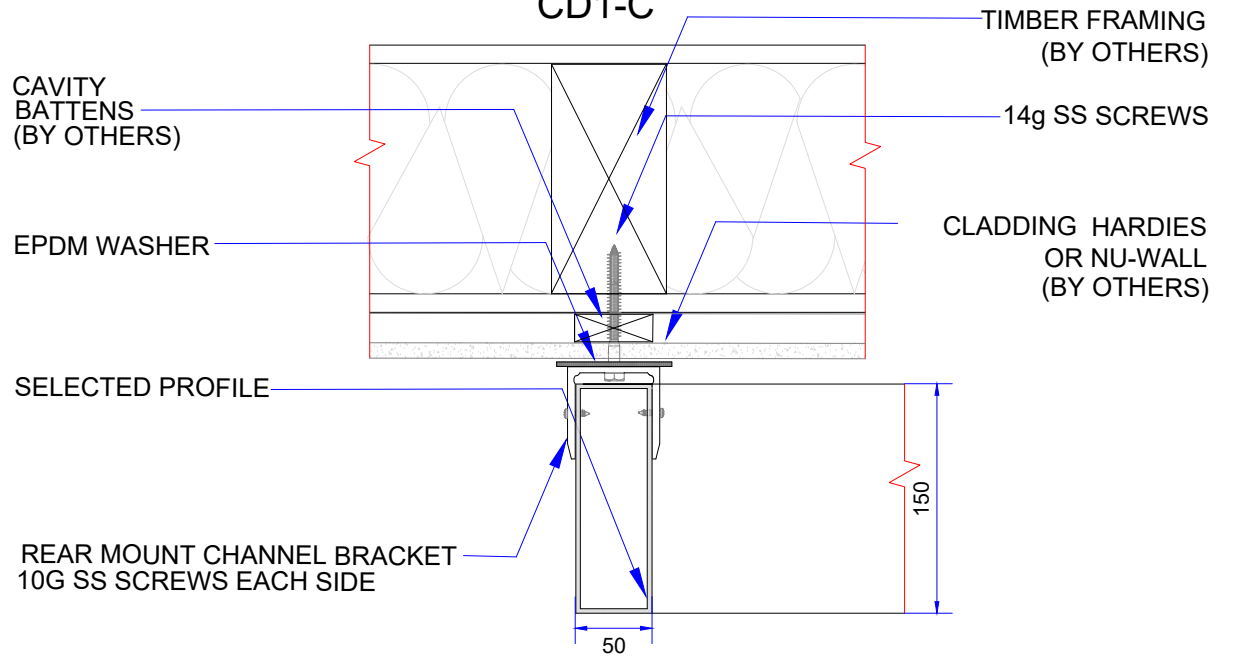
CONNECTION X-RAY IMAGE



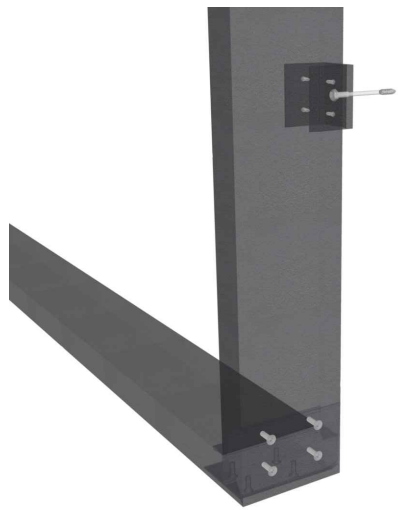
CD1-B



CD1-C

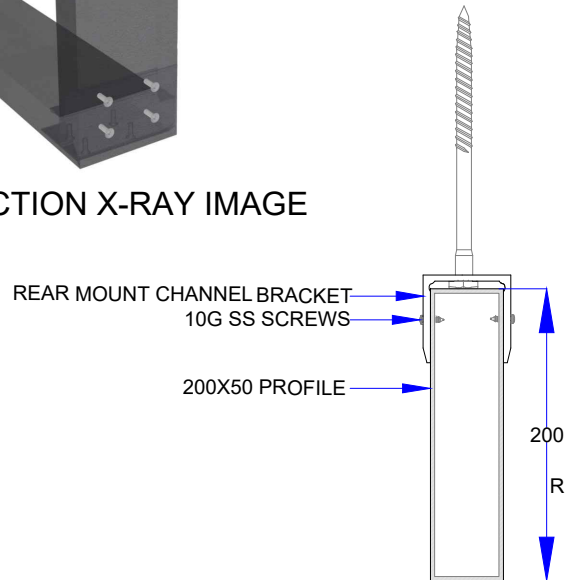
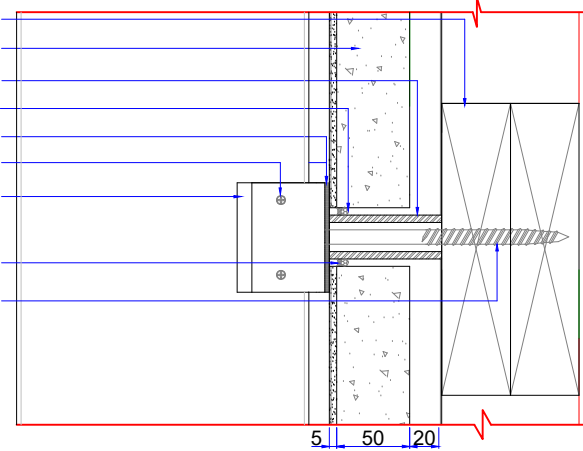


CD1-D

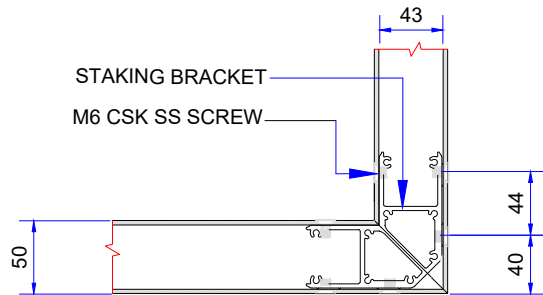


CONNECTION X-RAY IMAGE

- TIMBER FRAMING (BY OTHERS)
- RESENE INTEGRA FACADE SYSTEM (BY OTHERS)
- SS SPACER TUBE
- PEF ROD
- EPDM WASHER
- 10G SS SCREW
- REAR MOUNT CHANNEL BRACKET
- MS SEALANT
- SS M8 COACH SCREW



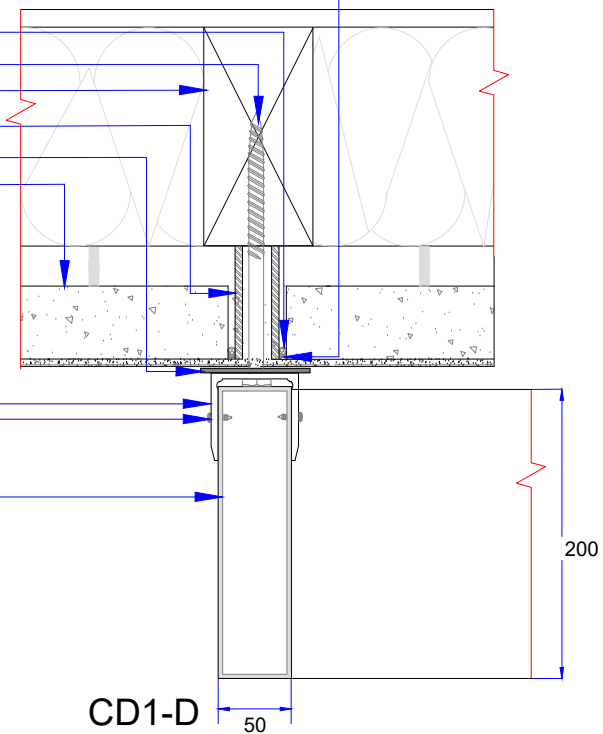
CD1-B



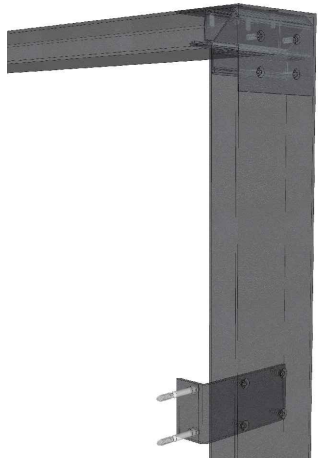
CD1-A

- MS SEALANT
- PEF ROD
- SS M8 COACH SCREW
- TIMBER FRAMING (BY OTHERS)
- SS SPACER TUBE
- EPDM WASHER
- RESENE INTEGRA FACADE SYSTEM (BY OTHERS)
- REAR MOUNT CHANNEL BRACKET
- 10G SS SCREW
- 200X50 PROFILE (SELECTED)

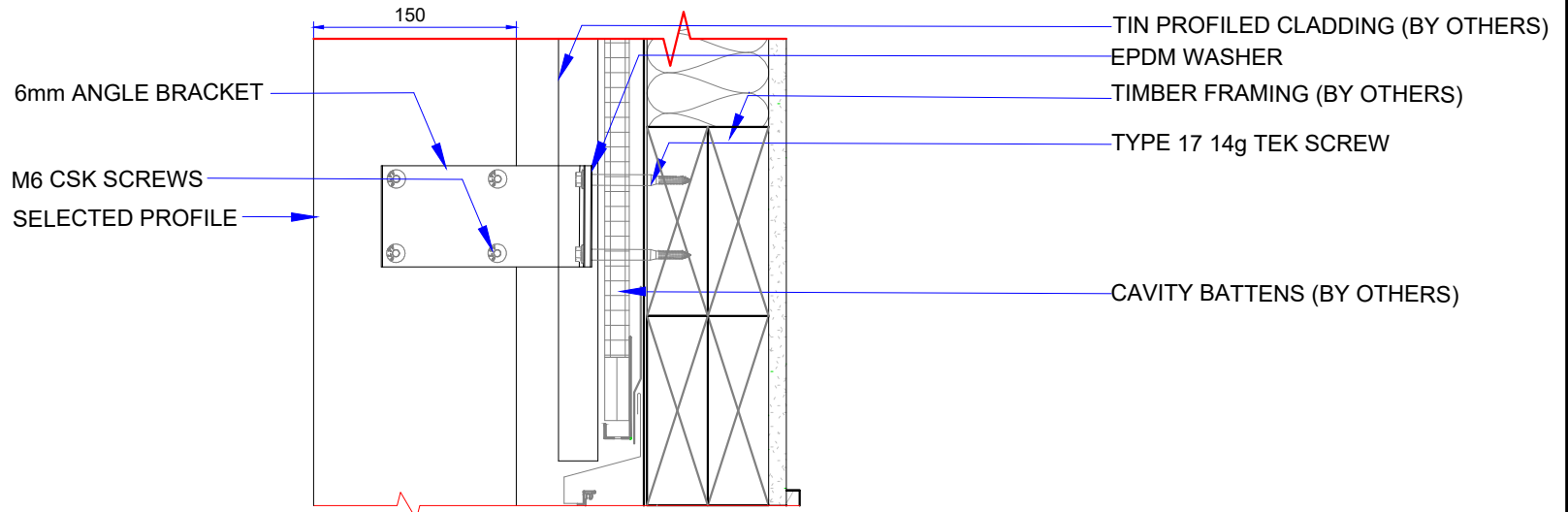
CD1-C



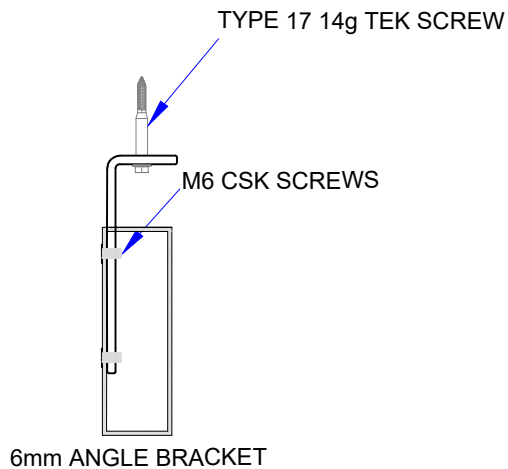
CD1-D



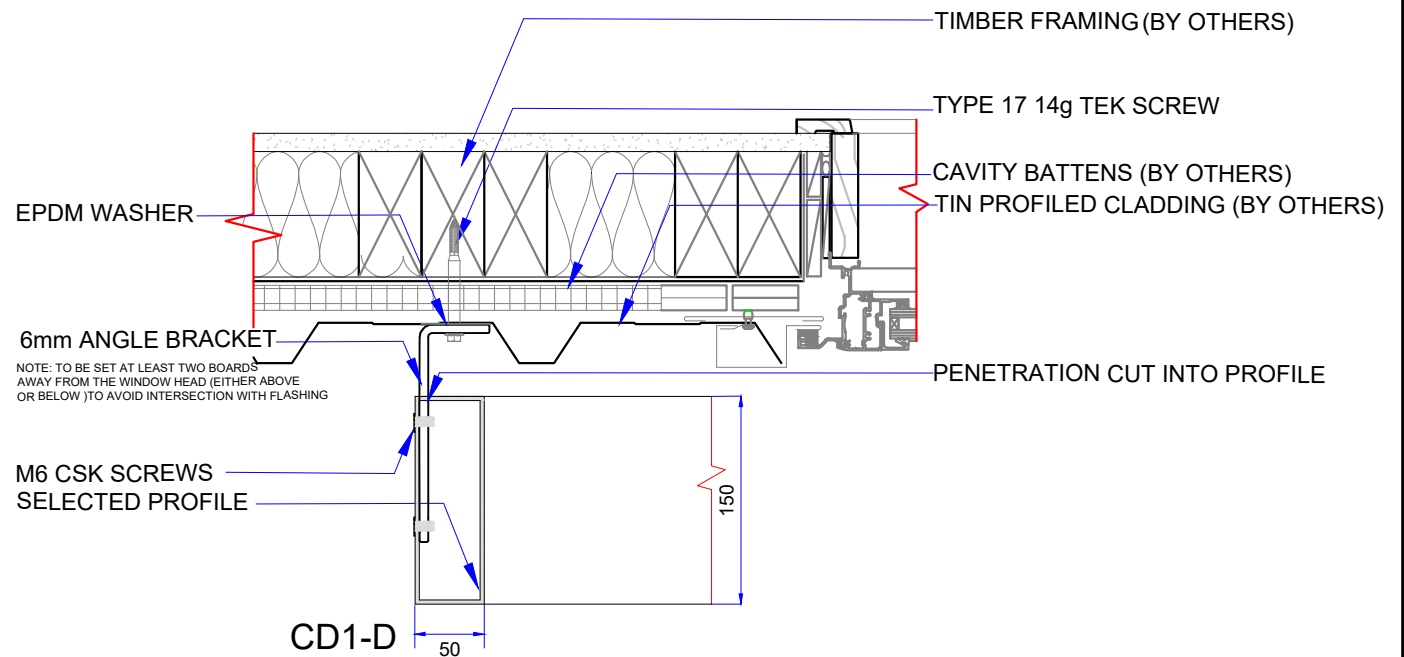
CONNECTION X-RAY IMAGE



CD1-C



CD1-B

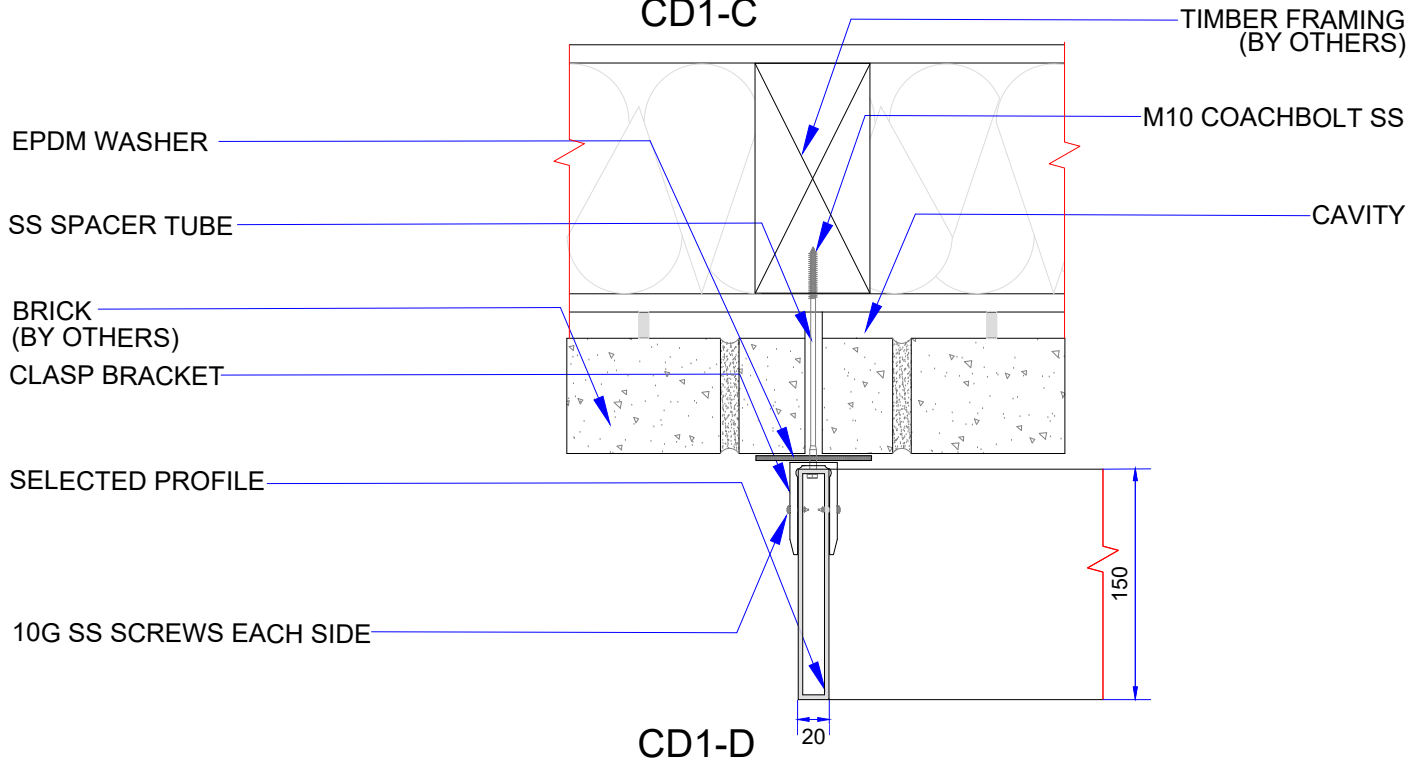
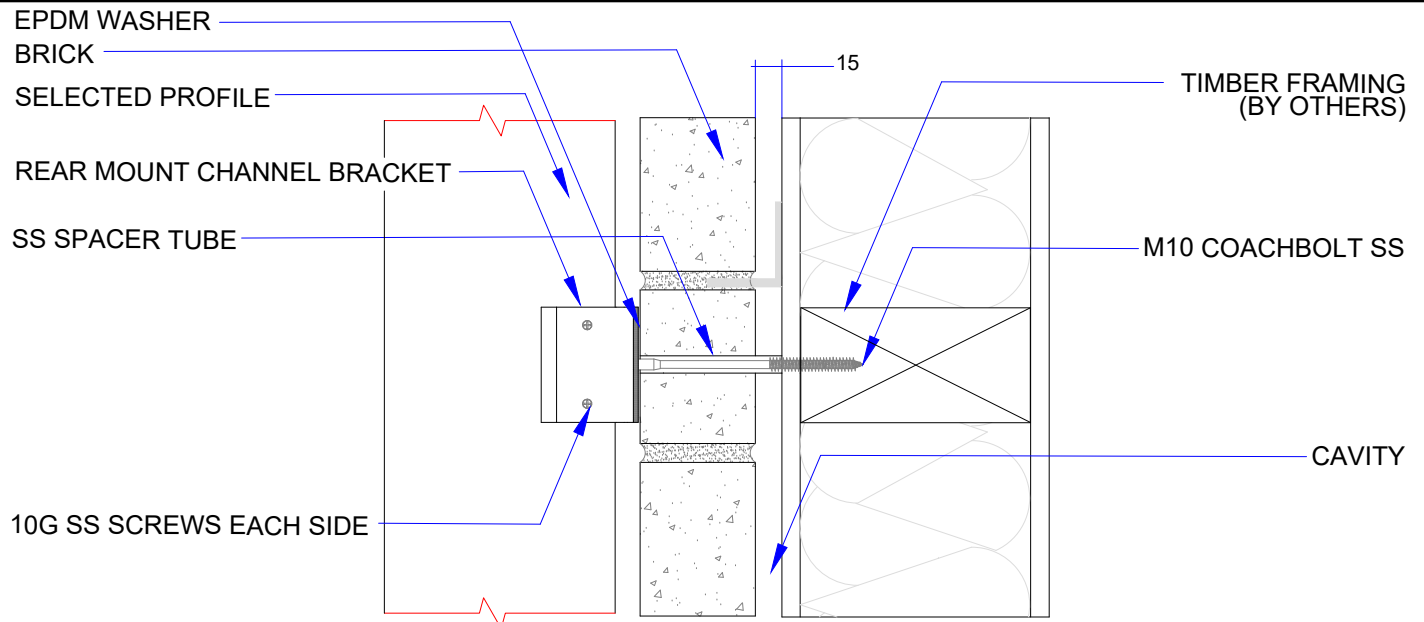
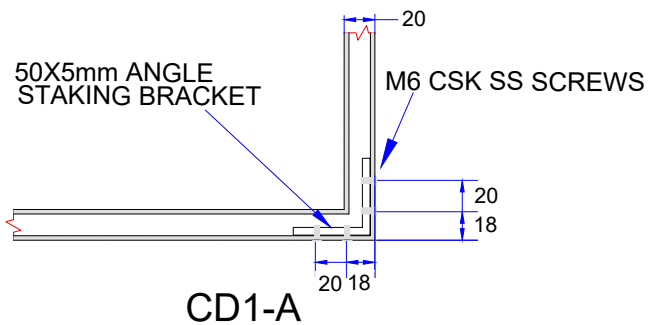
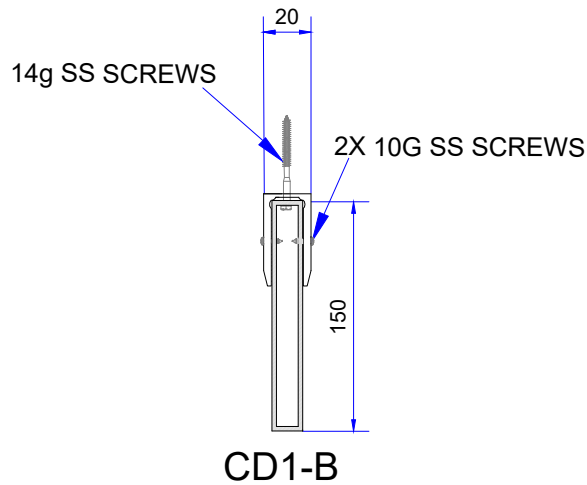


CD1-D

NOTE: TO BE SET AT LEAST TWO BOARDS AWAY FROM THE WINDOW HEAD (EITHER ABOVE OR BELOW) TO AVOID INTERSECTION WITH FLASHING



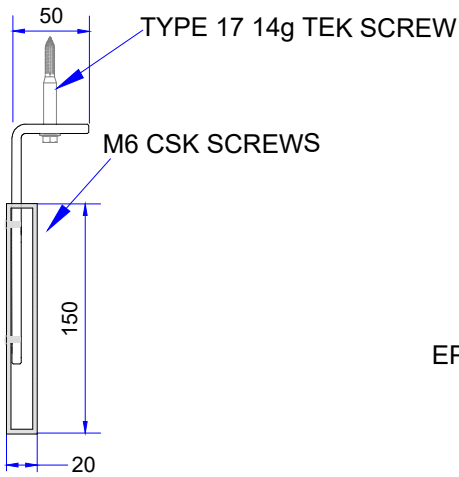
CONNECTION X-RAY IMAGE



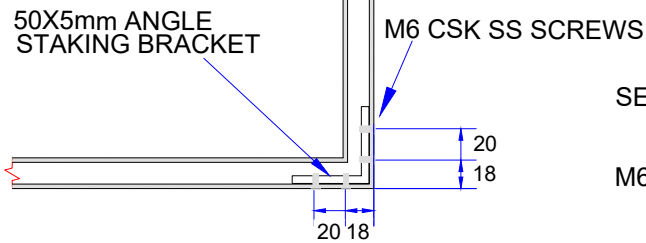
WINDOW HOOD STANDARD DETAIL



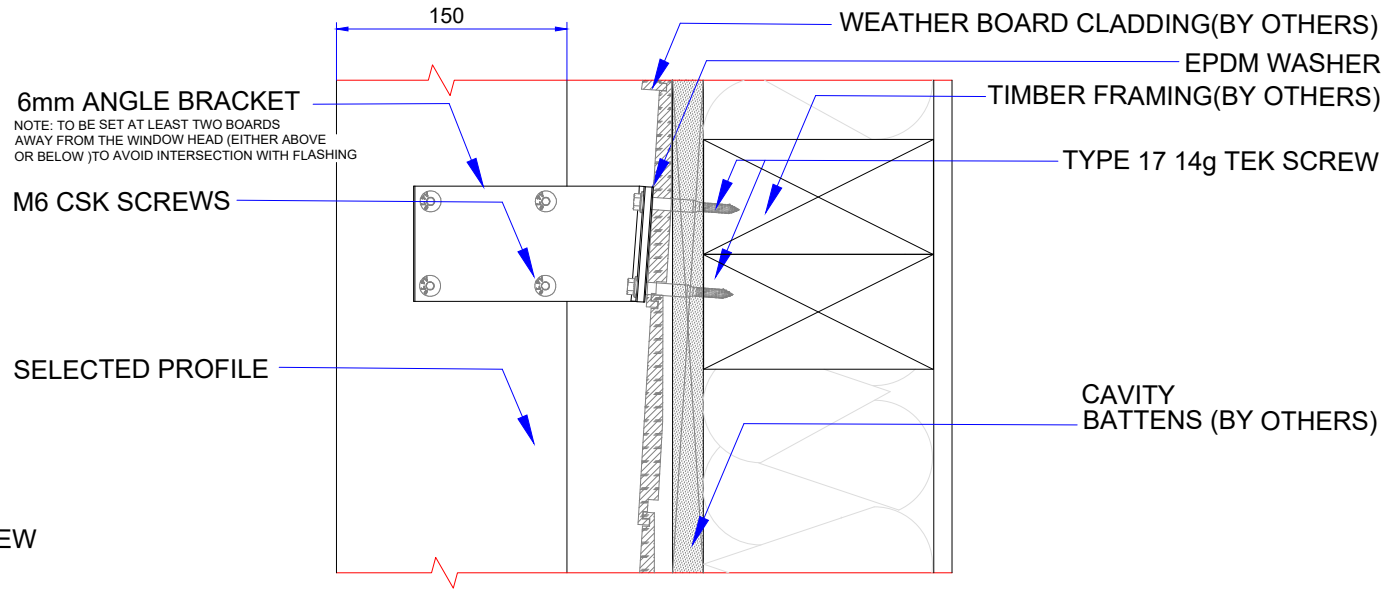
CONNECTION X-RAY IMAGE



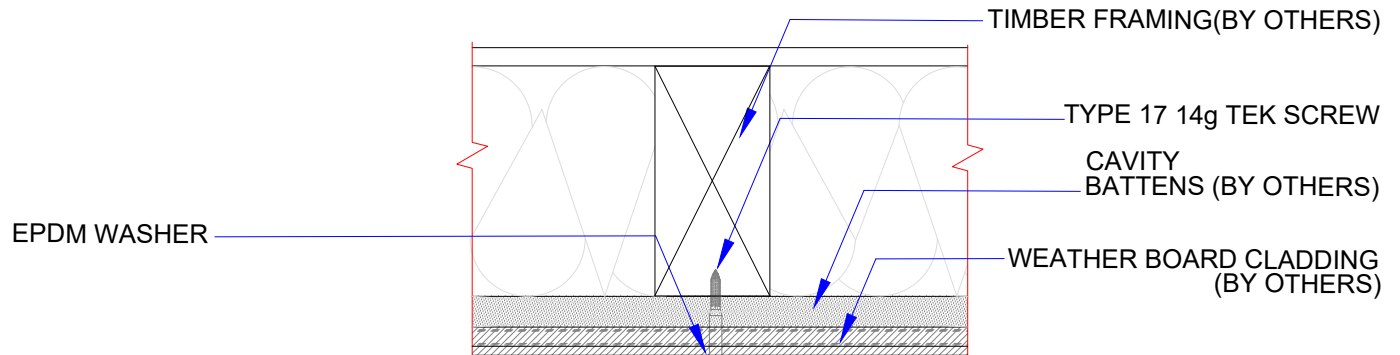
CD1-B



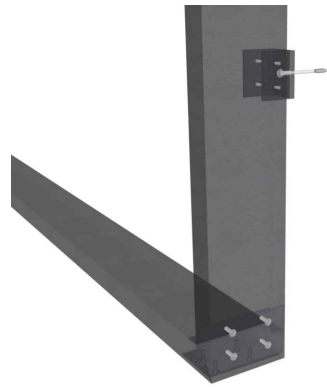
CD1-A



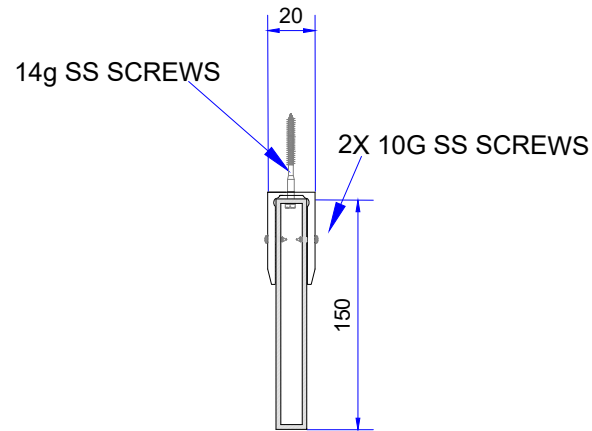
CD1-C



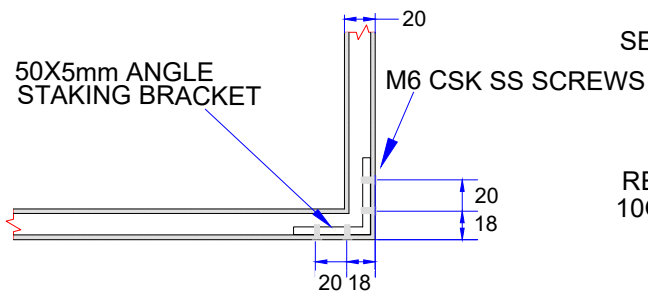
CD1-D



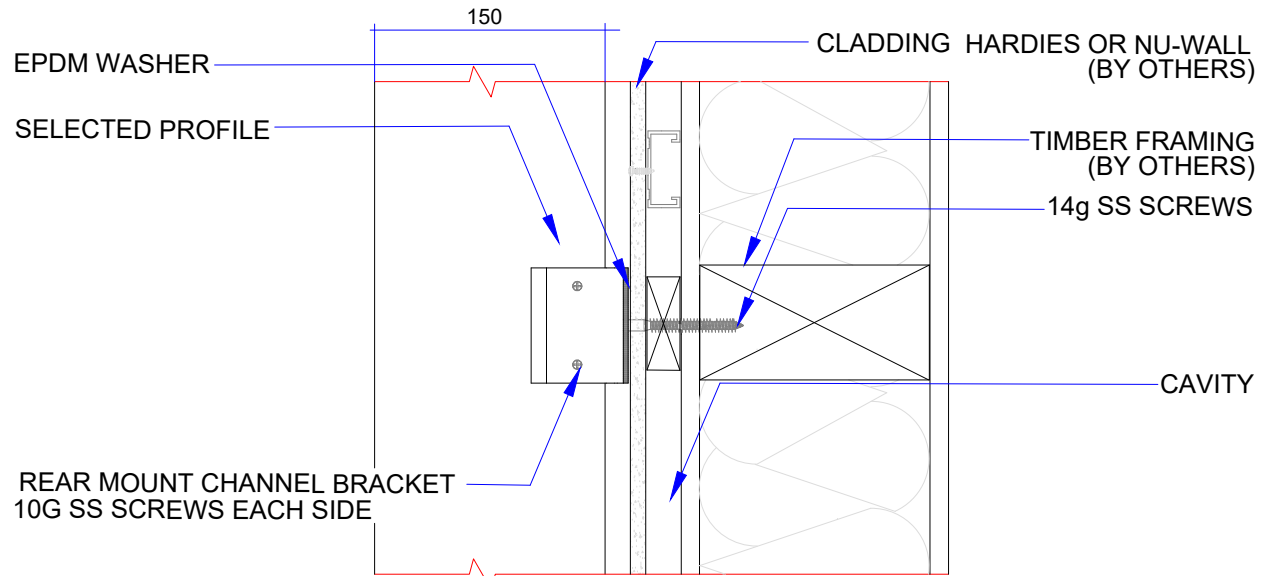
CONNECTION X-RAY IMAGE



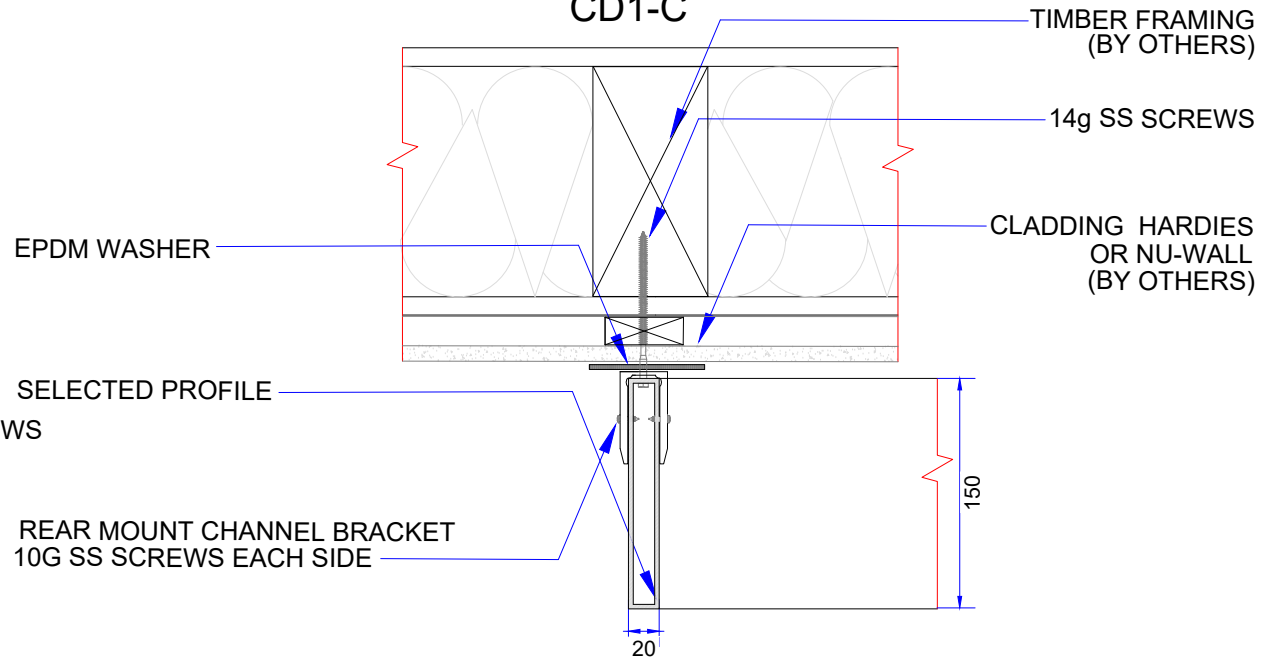
CD1-B



CD1-A



CD1-C



CD1-D



ADDRESS :
4 BEATRICE TINSLEY CRESCENT, ROSEDALE AUCKLAND NZ
PHONE : +64 92188690
EMAIL : sales@aurae.co.nz
WEBSITE : www.aurae.co.nz

PROJECT TITLE :
WINDOW HOOD STANDARD DETAIL

DATE : 18/02/21

SCALE :

LOCATION :
JOB NUMBER :

OWNER :

CONFORME :
DESIGN MANAGER

Drawings and specifications duly signed, stamped or sealed, as instruments of service, are the intellectual properties and documents of the designer / architect, whether the subject for which they are made is executed or not. It shall be unlawful for any person, without the consent of the architect or author of said documents to duplicate or to make copies of said documents for use in the repetition of and for other projects or buildings, whether executed partly or in whole.

SHEET CONTENTS :
NU-WALL / HARDIES FIXING DETAILS

NOTES :
DRAWN BY : jabbar@aurae.co.nz

SHEET NO :
11

5 11