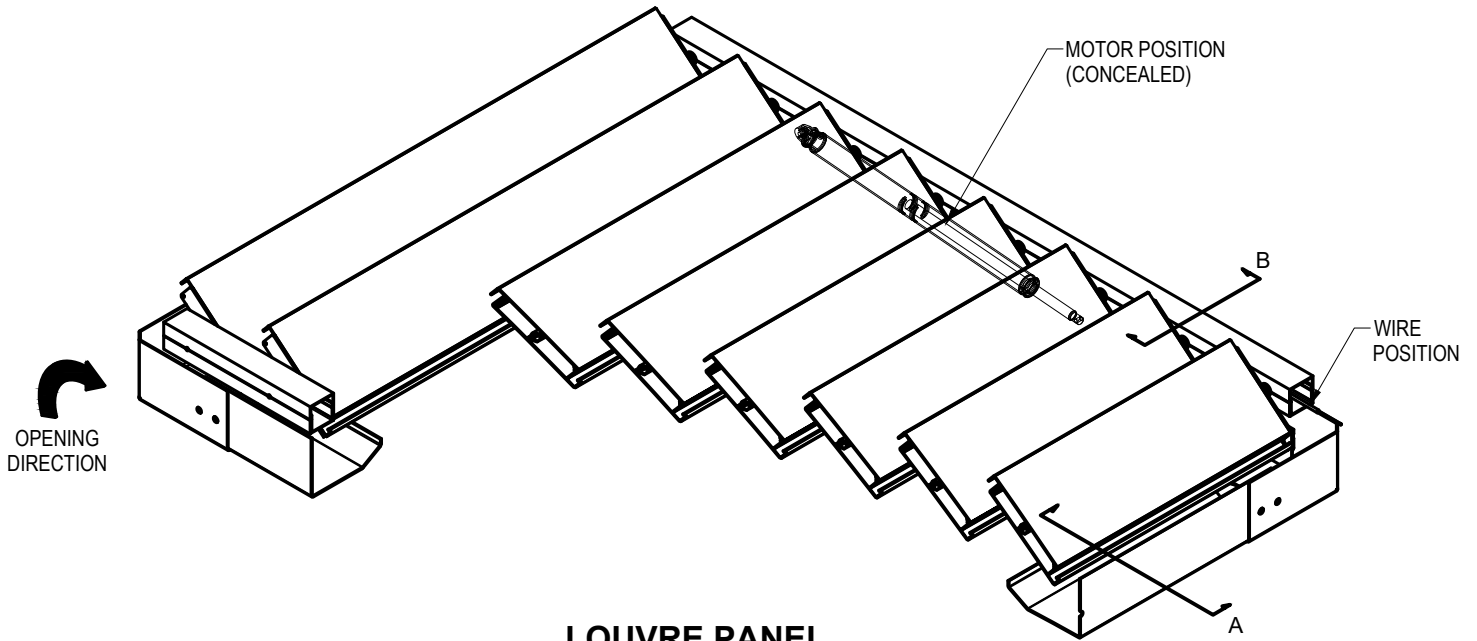
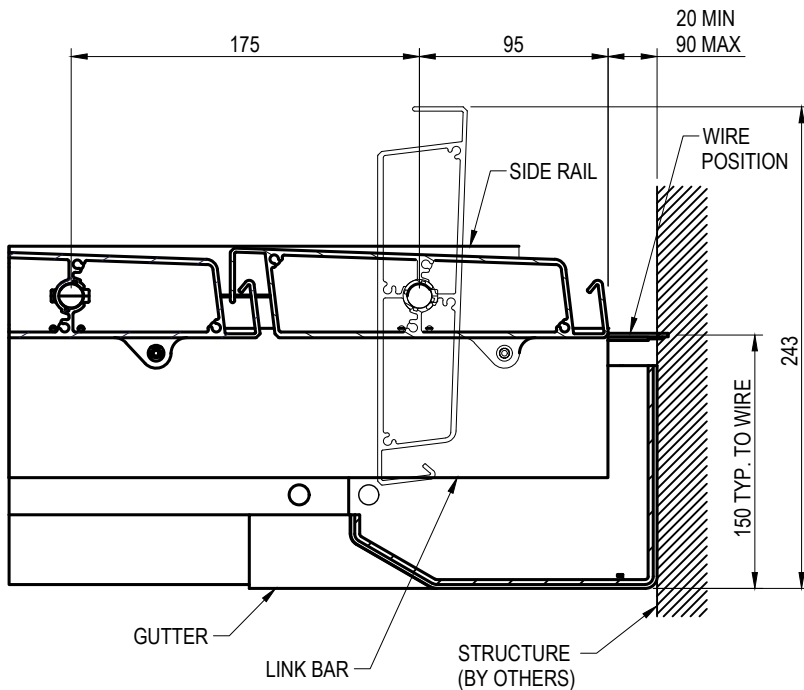


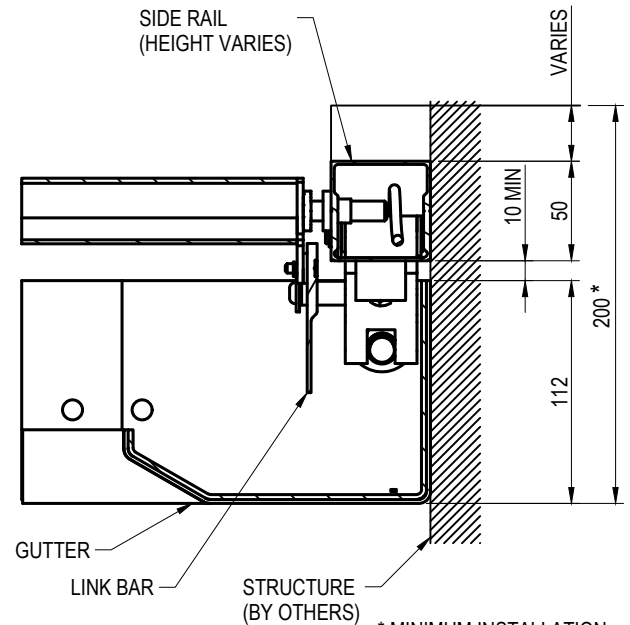
SLRS-XL-LVR - PROFILE



LOUVRE PANEL



DETAIL A



DETAIL B

* MINIMUM INSTALLATION DEPTH, ALLOW 200mm TO ACCOMMODATE FALLS

**SOLARIS™ OPENING ROOF
Technical Data Sheet**

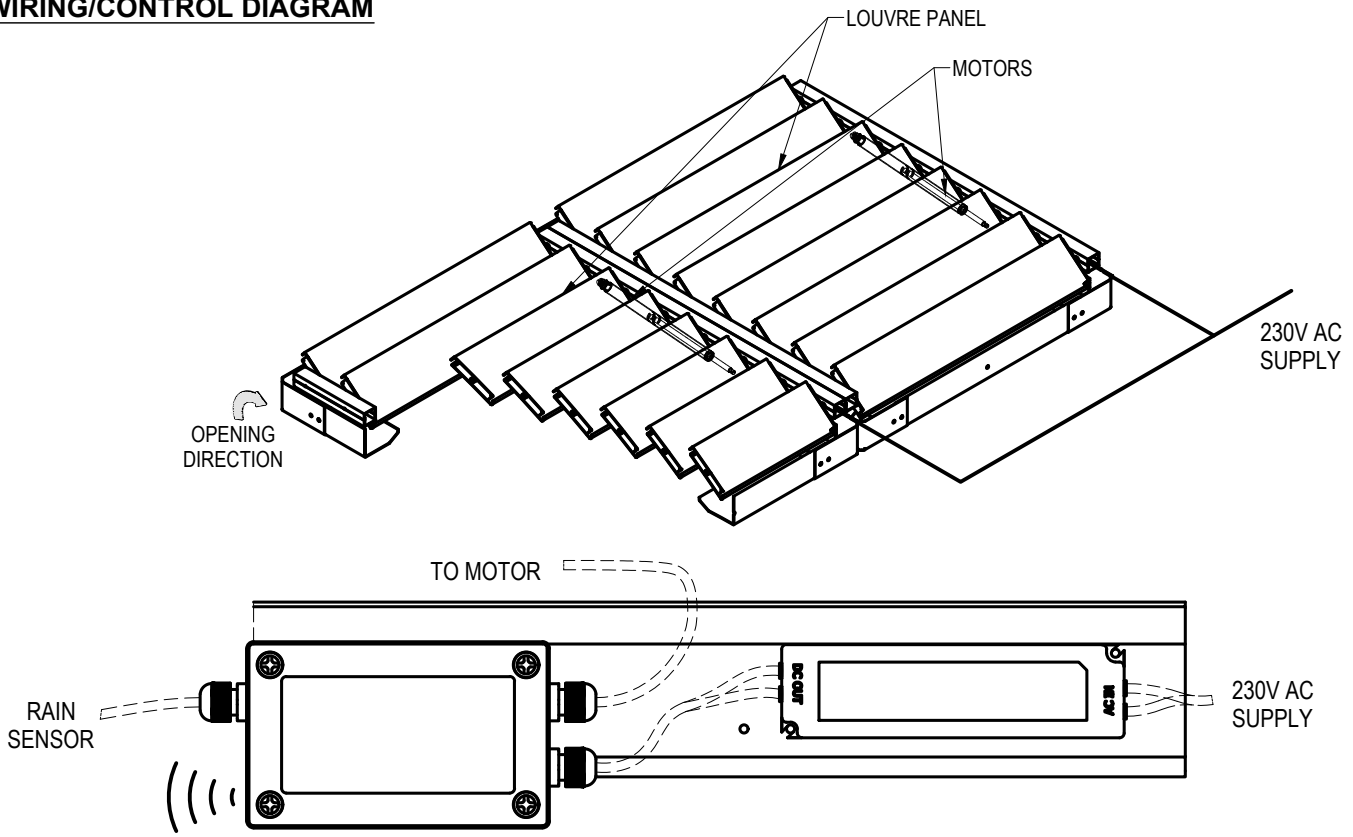


© 2018 All rights reserved
Auræ Ltd
Ph: +64 9 218 8690
E: sales@auræ.co.nz
www.auræ.co.nz

Scale: N.T.S.
Date: 11/04/2017
Page: 1 of 2

SLRS-XL-LVR Version 1

WIRING/CONTROL DIAGRAM



CONTROLLER WIRING ARRANGMENT

Deflections/Spans for SLRS-XL-LVR

Wind Zone	Self Weight	Low	Medium	High	Very High	Extra High
m/s KPa	0.0 m/s 0.0 KPa	32 m/s 0.88 KPa	37 m/s 1.18 KPa	44 m/s 1.68 KPa	50 m/s 2.17 KPa	55 m/s 2.63 KPa
Service load kn/m	0.035	0.146	0.200	0.303	0.396	0.473
Span m	Numbers in cells are deflections in mm					
4.3	5.55	23.05	31.48	47.74	62.32	74.35
4.4	6.09	25.27	34.51	52.34	68.32	81.51
4.5	6.66	27.64	37.76	57.26	74.75	89.18
4.6	7.27	30.18	41.23	62.53	81.62	97.38
4.7	7.92	32.90	44.93	68.14	88.95	106.12
4.8	8.62	35.79	48.88	74.13	96.76	115.45
4.9	9.36	38.86	53.08	80.50	105.08	125.37
5.0	10.15	42.13	57.55	87.28	113.93	135.93
KEY:	Light Grey shading = Acceptable span		Dark Grey shading = Over recommended span		Black shading = Unsafe	

*'Over Recommended Max Span' is the point at which Aurae considers the deflection as 'unsightly'

*Deflection values assume operable louvres in the closed position (therefore no porosity factor)

*Deflection values assume simple support and do not take into account the integrity of any fixing.

*Deflection values assume a horizontal louvre (not tilted)

*Please contact Aurae if your scenario is : Above 10m height, or is in a specific design location

**SOLARIS™ OPENING ROOF
Technical Data Sheet**



© 2018 All rights reserved
Aurae Ltd
Ph: +64 9 218 8690
E: sales@aurae.co.nz
www.aurae.co.nz

Scale: N.T.S.
Date: 11/04/2017
Page: 2 of 2

SLRS-XL-LVR Version 1